



*jordan fishwick*

MANCHESTER  
Aranmore





## Aranmore, Manchester, M20 6AB

Guide Price £290,000



### The Property

A superb, two bedroom, first floor apartment located on one of Didsbury's finest tree lined roads, forming part of an attractive double fronted Edwardian Manor House which has been converted to form a select number of apartments, with a residents car park and communal gardens. This particular property is presented to a high standard throughout and includes a generous entrance hall with cloaks space, living area with large bay window, fitted kitchen with a range of units, two bedrooms with ample space for freestanding furniture and the bathroom, with white suite. Ballbrook Avenue is perfectly placed, with easy access to the Metrolink and the villages of both Didsbury & West Didsbury alike, with their array of independent shops, cafés & restaurants. There is also residents permit parking on Ballbrook Avenue itself. \*\*No onward chain\*\*

### Directions

#### M20 6AB





- Attractive Edwardian conversion
- Two bedrooms
- Living room with square bay window
- Fitted kitchen & bathroom
- Double glazed
- Gas central heating
- Residents parking
- Communal gardens
- Great location on a tree lined road
- No onward chain

Postcode - M20 6AB

EPC Rating - C

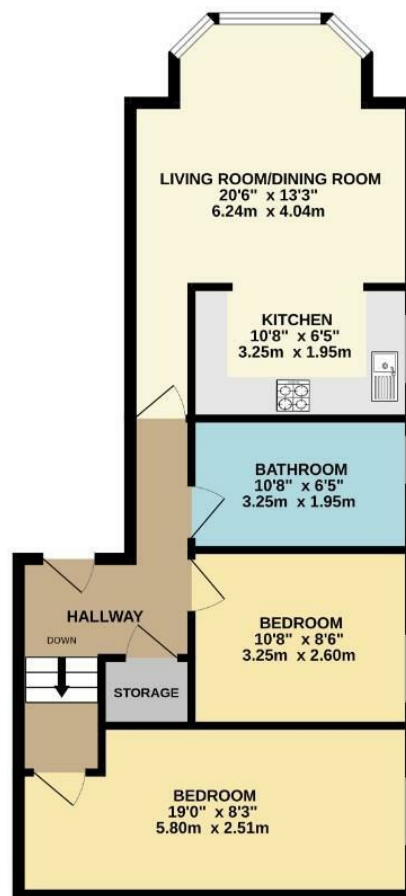
Floor Area - 648.00 sq ft

Local Authority - Manchester City Council

Council Tax - C



FIRST FLOOR  
648 sq.ft. (60.2 sq.m.) approx.



TOTAL FLOOR AREA : 648 sq.ft. (60.2 sq.m.) approx.  
Measurements are approximate. Not to scale. Illustrative purposes only.  
Made with Metropix ©2025



These particulars are believed to be accurate but they are not guaranteed and do not form a contract. Neither Jordan Fishwick nor the vendor or lessor accept any responsibility in respect of these particulars, which are not intended to be statements or representations of fact and any intending purchaser or lessee must satisfy himself by inspection or otherwise as to the correctness of each of the statements contained in these particulars. Any floorplans on this brochure are for illustrative purposes only and are not necessarily to scale.

Offices also at: Wilmslow, Macclesfield, Hale, Sale, Chorlton, Glossop, Manchester & Salford

757-759 Wilmslow Road, Didsbury Village, Manchester

0161 445 4480

didsbury@jordanfishwick.co.uk  
www.jordanfishwick.co.uk